



Seating

Walmesley Rise & Recline

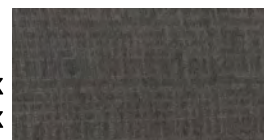
The Walmesley Rise & Recline Chair is a dual motor design in both **Standard** and **Petite** allowing independent control of the backrest and leg rest. This enables the user to achieve ultimate comfort whilst using their chair. The chair has a waterfall pillow design for optimum comfort. This chair offers full chase and must be placed at least 71cm away from the wall for daily operation. Maximum chair rise of 30°.



- * Dual motors run independently to control the backrest and the leg rest
- * Handset with fastener, easy to use hand control
- * High quality OKIN 2 motor
- * Side pocket for store magazine or TV remote
- * Chair should be placed at least 71cm away from the wall for daily operation
- * 1 year warranty
- * Weight capacity 160kg

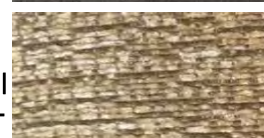
Mink

Product Code: VG701MK
Petite VG701PMK



Oatmeal

Product Code: VG701OAT



Chestnut
Product Code: VG701LBR
Petite VG701PLBR

Specifications—Standard

Overall Height: 1120
Overall Length: 880
Overall Width: 880
Seat Depth: 490
Seat Width: 470
Width Between Arms: 470
Seat Height: 510
Armrest Height: 160
Unit Weight: 56.5
Weight Capacity: 160

Specifications—Petite

Overall Height: 1120
Overall Length: 880
Overall Width: 830
Seat Depth: 490
Seat Width: 420
Width Between Arms: 420
Seat Height: 510
Armrest Height: 160
Unit Weight: 56.5
Weight Capacity: 160
Measurements in mm/kg